



OneSafePlace



**2025 Annual Report**

# Table of Contents

**3**

**A Note  
From Ken**

**4**

**Our Core  
Values**

**5**

**Family  
Justice  
Center**

**6**

**Client  
Feedback**

**7**

**Journey to  
Hope**

**8**

**Imagine No  
Violence**

**9**

**The Ladder**

**10**

**Children's  
Programs**

**11**

**Volunteer**

**12**

**FW Police  
Bike Support  
Group**

**13**

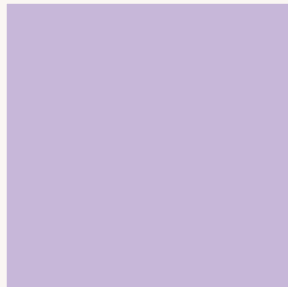
**Crime  
Stoppers**

**14**

**Safe City  
Training &  
Education**

**15**

**Operating  
Financials**





# Message from Our President and General Counsel

At One Safe Place, our mission is create community and family safety, ensuring survivors have access to safety, support, and a path forward. This year, we were proud to help thousands of families get help and find hope.

Working alongside more than two dozen partner agencies, our team continues to deliver coordinated, trauma-informed services that help survivors rebuild their lives. Through advocacy, counseling, legal assistance, and prevention initiatives, we are helping individuals move from crisis to stability while strengthening the safety of our community.

This year also marked an important milestone for our organization. The Ladder workforce readiness program officially became part of One Safe Place, expanding our ability to help survivors achieve long-term safety through education, job skills, and economic independence.

At the same time, we continued investing in the next generation through programs that support children and youth exposed to violence—ensuring they have the tools, mentorship, and resilience to build healthier futures and break cycles of violence.

None of this work happens alone. It is made possible by the dedication of our partners, supporters, volunteers, and staff. Together, we are proving that when a community stands together against violence, lives change, and hope grows.

A handwritten signature in black ink, appearing to read 'K Shetter'.

Kenneth Shetter  
President & General Counsel  
One Safe Place



# Our Core Values

## Safety

is a basic human right. Every human being has the right to be free from the fear of violence. Community violence and intimate partner violence are intrinsically linked.

## Respect

is meeting survivors where they are. It means believing their stories, honoring their dignity, and walking alongside them with compassion. Respect requires trauma-informed care, cultural humility, and a deep commitment to serving marginalized and underserved communities with skill and heart.

## Justice

demands accountability and equity. Domestic violence must have consequences, and communities must have systems in place to prevent the most dangerous outcomes. We work toward a future where safety and fairness are not privileges, but guarantees.

## Hope

is the foundation of resilience. It's the belief that the future can be brighter than the past—and the knowledge that we each have a role in making it so.

## Excellence

means doing what works—and doing it together. We are committed to evidence-based practices, cross-agency collaboration, and a culture of transparency and accountability.



# Family Justice Center

In 2025, One Safe Place had

# 32,561

total client visits

# 1,281

new client intakes



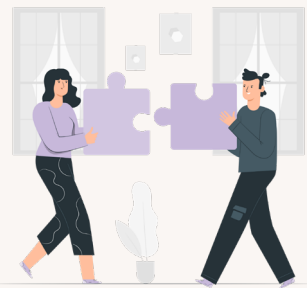
# 4,068

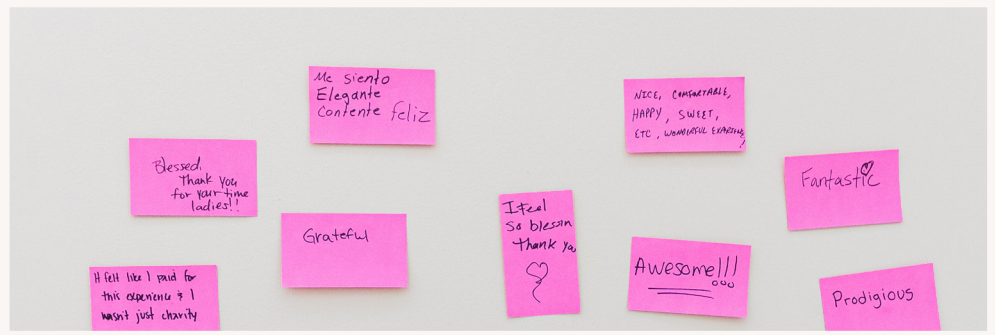
client referrals to partner agencies



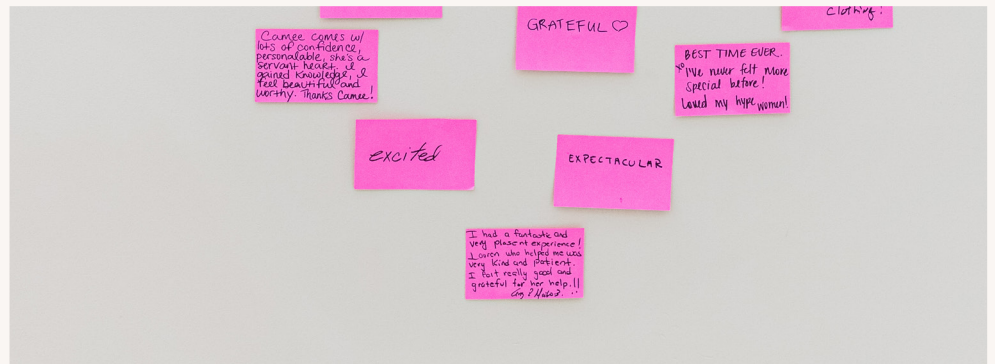
# 25

partner agencies providing coordinated services under one roof





# Client Feedback



**99%**  
felt respected  
while seeking  
services

**97%**  
developed  
strategies to  
improve their  
safety

**96%**  
increased their  
knowledge  
on domestic  
violence

**88%**  
increased  
hopefulness after  
speaking with an  
advocate

# Journey to Hope

Clients access clinical services through Journey to Hope. A team of therapists work to design each journey to bring awareness, understanding, and to transform every experience into hope for survivors.

**643**

clients received  
clinical services

**1,553**

hours of counseling  
provided



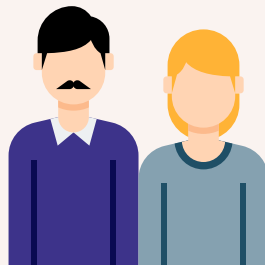
*These classes have opened my eyes to help my children in a better calm way. They trust me enough to express their feelings and emotions than before they would act out.*



**COURT  
PREPARATION**



**YOGA**



**COPE**



**SPIRITUAL  
SUPPORT**



**VOICES PEER  
SUPPORT**

# Imagine No Violence

Imagine No Violence is an annual art contest that invites Tarrant County students to create original artwork promoting peace and nonviolence. Launched in 2001, the program now spans multiple districts across Tarrant County, using creative expression to counter the glorification of violence in youth culture.



**116**  
participants



**4**  
school districts  
participated



# The Ladder

The Ladder is One Safe Place’s workforce readiness program, offering affordable computer and professional skills training – in English and Spanish – to help survivors of violence gain the tools they need to enter or re-enter the workforce.

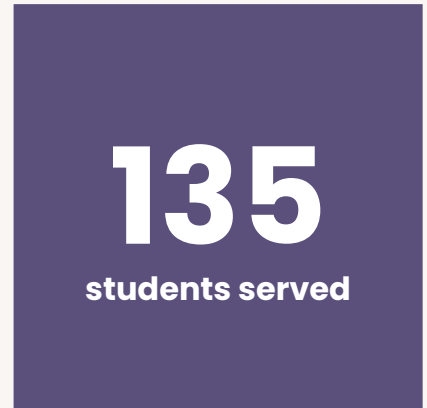
**84%**

minority population



**135**

students served



**95%**

graduation rate





# Children's Programs

Children who experience violence don't have to repeat it. With the right support — safety, mentorship, and hope — they develop the resilience to heal, grow, and help build a more peaceful community for the next generation.



**84**

**children  
and youth  
participated in  
Camp HOPE TX**

**753**

**Hope  
Connection  
visits**  
(includes Holiday Toy Store)

**277**

**Growing Hope  
visits**

**129**

**individual  
counseling  
sessions**

# Volunteer

## Volunteer Spotlight: *Planting Peace, Growing Community*

This year, One Safe Place partnered with Better Block to launch “Planting Peace, Growing Community,” a volunteer-driven beautification initiative at the Martin Luther King Community Center in Fort Worth. The event drew volunteers who gave their time to help transform the center’s entrance into a vibrant, welcoming green space.

Volunteers built and planted new flower beds, installed fresh mulch, and cleared debris from areas of the entrance that had long needed attention. The improvements enhanced the center’s curb appeal while also serving as a meaningful crime deterrent — a reflection of our belief that well-maintained, beautiful spaces foster safer neighborhoods.



**392**  
volunteer hours



**1,031**  
intern hours



*Scan to  
watch  
the recap  
video!*



# Fort Worth Police Bike Support Group

**\$79K**

in specialized  
equipment  
provided to bike  
officers

**\$3K**

in special  
recognitions



# Crime Stoppers

## 2025 Tips Spotlight

Tip was received that Subject was selling suppressors and switches at multiple addresses and would sell to criminals and felons. Tipster gave location of where it was kept. Arrest made and seized machine guns, silencers, ammo, parts and other weapons of a value of \$28,000.

Student made a tip regarding another student that a concealed a firearm on campus in his truck. The Tipster informed us that the student was on social media talking about having a problem with another student that he wanted to "kill" and that he was going to intimidate him with the firearm. The Tipster was alarmed that he may do something bad to the student so he submitted a tip to Campus Crime Stoppers. Student with the firearm was arrested on campus.

**3,649**  
total tips received

**149**  
arrests

**324**  
cases cleared

**\$63K**  
rewards



**2024 Productivity Award Recipient**



# 1,119

number of individuals receiving training on emerging trends and innovative crime and violence prevention strategies

# 91

Number of law enforcement professionals who received evidence-based interview and interrogation training at OSP.

## Safe City Training and Education



# 115

Number of community trainings and outreach events.

# 1,517

Number of citizens engaged in community presentations.

# Operating Financials

	Revenue	Expenses
Total	4,946,427	4,778,423
Operating	4,946,427	3,812,182
Capital	0	966,241

	Revenue	Percentage
Total	4,946,427	100%
Government Grants & Contracts	2,174,059	44%
Foundations	416,589	8%
Business & Individual	152,393	3%
Special Programs (Net)	785,898	16%
Program Income	1,385,488	26%
Social Enterprise	32,000	1%

	Expense	Percentage
Total	3,812,182	100%
Programs	3,430,964	90%
Fundraising	152,487	4%
Mgmt & Admin	228,731	6%



# OneSafePlace

[www.OneSafePlace.org](http://www.OneSafePlace.org)

817-916-4323

1100 Hemphill Street

Fort Worth, TX 76104